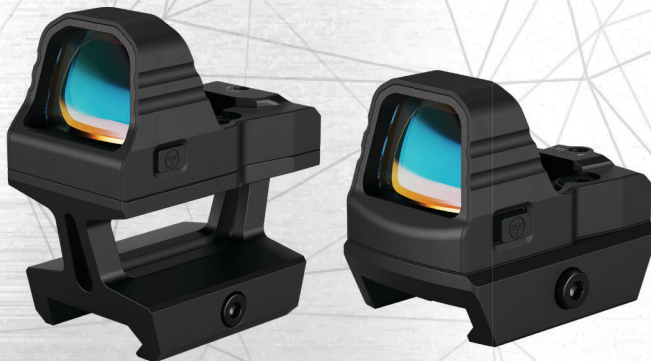




# IRONCLAD MINI REFLEX F1/F3

REFLEX SIGHT

## USER MANUAL



FF26032/FF26033

The Firefield™ brand has products designed to maximize every intense moment. Originally designed for consumers who need products to hold up to heart pounding, fast-paced combat in the field with Xtreme shooting sports, Firefield™ has crossed over to service customers with hunting and tactical needs as well.

Firefield™ offers quality products with the outdoor enthusiast and shooting fanatic in mind that are affordable to the masses. Prepare for victory with the latest Firefield™ products!

The Firefield™ brand consists of riflescopes, laser sights, boresights, tactical flashlights, reflex sights, AK and Quad Rail mounts, binoculars and other shooting accessories. Firefield™ Products are compatible with paintball, airsoft, AR15, shotguns and pistols.

Firefield™ concentrates on providing the consumer with products for fast-paced situations while being durable, yet affordable. Firefield™ works diligently creating products to serve the next generation of fast-paced gun enthusiasts. Transform fears into glory and excitement with Firefield™!

© Sellmark Corporation, all rights reserved

**[www.firefield.com](http://www.firefield.com)**

## REFLEX SIGHT

The Ironclad Mini Reflex Sight F1 and F3 from Firefield are compact powerhouses of a red dot sight. Built tough for the rigors of shooting, these sights are Firefield's most compact yet, making it the ultimate choice for pistols or backup setups.

Crafted with a rugged rubber coating, the Ironclad ensures durability and a solid grip in any condition. Its custom lens shape enhances target acquisition speed, while the slim bezels boost situational awareness and expand your field of view through the optic.

Powered by a CR2032 battery, the Ironclad's 3.6/4. MOA dot offers 10 brightness settings and an impressive battery life of up to 480 hours. But where it truly excels is in its versatility. Compatible with popular mounting footprints like Docter/Noblex, RMSc, Venom, and Fastfire it comes with multiple screw mounting kits for flexible setup options.

Despite its featherweight design, this red dot sight is built to endure. Crafted from aircraft-grade aluminum and featuring an anti-reflective lens, it's shockproof and fogproof, ready to handle the recoil of hefty calibers like the .45 ACP from a 1911 or the powerhouse .308 from an AR10. With the Ironclad Mini Reflex Sight F1, Firefield delivers unmatched performance in a compact package.

## FEATURES

- Protective rubber coating increases durability and grip
- Custom lens shape improves target acquisition time
- Thin bezels increase situational awareness and expand FOV through the optic
- Compatible with popular mounting platforms
- Ships with several screw mounting kit to allow for different mounting options
- Extremely lightweight at under 1 oz
- Made of aircraft grade aluminum

## TECHNICAL SPECIFICATIONS (FF26032)

Magnification	1x
Reticle color	Red
Eye relief (in/mm)	Unlimited
Objective lens diameter	20.5 x 15
Reticle type	3.6 MOA Dot
Reticle brightness settings	10
Battery type	CR2032
Battery mount	Bottom
Windage/Elevation adjustment range	180 MOA
Battery life (hours)	High: 85 Low: 480
Nitrogen filled / shockproof / fog proof	No / Yes / Yes
Parallax setting (yd/m)	50 / 45.72
Footprint	Docter / Noblex / Venom / Fastfire
Dimensions of high mount (in/mm)	1.8 x 1.09 x 2.11 46 x 28 x 54

Maximum caliber	.308 WIN / .45 ACP
Body material	Rubber Coated Aluminum 6061
Finish / color	Matte Black
Weight with low mount (oz/g) Weight with high mount (oz/g)	1.73 / 49 2.19 / 62

### INCLUDES:

- Lens cloth
- T10 torx wrench
- T15 torx wrench
- CR2032 battery
- Label mounting screws kit
- Rubber shim
- Low mount
- High mount

## TECHNICAL SPECIFICATIONS (FF26033)

Magnification	1x
Reticle color	Red
Eye relief (in/mm)	Unlimited
Objective lens diameter	18 x 14.5
Reticle type	4 MOA Dot
Reticle brightness settings	10
Battery type	CR2032
Battery mount	Bottom
Windage/Elevation adjustment range	180 MOA
Battery life (hours)	High: 85 Low: 480
Nitrogen filled / shockproof / fogproof	No / Yes / Yes
Parallax setting (yd/m)	50 / 45.72
Footprint	RMS / RMSc
Dimensions of low mount (in/mm)	1.60 x .97 x 1.38 41 x 25 x 35

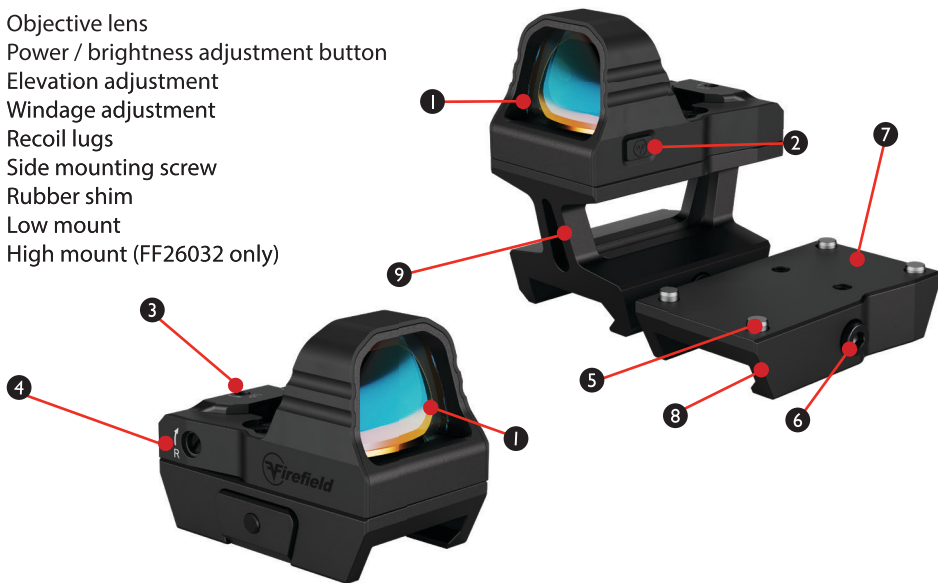
Maximum caliber	.308 WIN / .45 ACP
Body material	Rubber Coated Aluminum 6061
Finish / color	Matte Black
Weight with low mount (oz/g)	1.33 / 38

### INCLUDES:

- Lens cloth
- T10 torx wrench
- T15 torx wrench
- CR2032 battery
- Label mounting screws kit
- Rubber shim
- Low mount

## DIAGRAM

1. Objective lens
2. Power / brightness adjustment button
3. Elevation adjustment
4. Windage adjustment
5. Recoil lugs
6. Side mounting screw
7. Rubber shim
8. Low mount
9. High mount (FF26032 only)





## OPERATING POWER AND BRIGHTNESS ADJUSTMENT

The Ironclad Mini Reflex Sight has one button (2) to control the unit. To operate the optic:

1. Press the button (2) a single time to turn the optic ON.
2. Press the button (2) again to change the brightness setting up 1. Consecutive presses of the button will cycle the brightness setting from 1-10.
3. Hold the button (2) to turn the optic off.



## INSTALLING A BATTERY

The Ironclad Mini Reflex Sight has one button (2) to control the unit. To operate the optic:

1. If the optic is mounted to a firearm, ensure the firearm is pointed in a safe direction and unloaded.
2. Remove the optic from its mount by loosening the mounting screws.
3. Turn the unit upside down and place the battery in the battery slot, positive side facing out.
4. Ensure the unit is functioning properly by turning it on and checking for the dot.
5. Mount the optic by following the appropriate mounting instructions below:





## MOUNTING

The Ironclad Mini Reflex Sights can be mounted on many types of firearms. For best practices, please read the following instructions before attempting to mount the reflex sight.

### WHEN MOUNTING ON PISTOLS

The Ironclad Mini Reflex Sights are capable of being mounted directly to some pistol slides that have an optics cut or utilize a plate system. FF26032 is designed for the Docter/Noblex/Venom/Fastfire (F1) type footprints while FF26033 is designed for the RMS/RMSc (F3) type footprints. Note: These units will only mount directly to compatible pistol slides cut with the same footprint or plate.

Both units come with several screw types and lengths to help you mount the optic more easily. The screws are fitted with a plastic retaining washer. To remove press firmly and unscrew the bolt to release. Make sure to reinstall when switching the screws to accommodate other mounting options.

To mount the optic:

1. Ensure your firearm is pointed in a safe direction and unloaded.
  2. Confirm the firearm has the same optics cut or is utilizing the correct plate.
  3. Place the included rubber shim (7) on top of the pistol's slide, making sure to line up the holes.
  4. Place the Ironclad Mini Reflex Sight on the slide cut or plate with the objective side (1) of the optic nearest the muzzle. The optic may fit tightly. Ensure there is no gap underneath the unit.
  5. Confirm that you have the correct screw size\* and tighten the screws loosely.
    - a. If the screws will not tighten down completely, please use the next shorter size for mounting.
    - b. If the screws are difficult to turn or will not start threading, please ensure you are using the correct screw size.\*
    - c. If you are using custom screws or screws not included with the kit, it is best to apply a blue threadlocker to the threads and follow the manufacturers guidelines on application before mounting the optic.
  6. Using a torque wrench, tighten the mounting screws to 15 in-lbs (1.7 N-m). *Do not overtighten.*
- \*If you have any questions about screw fitment, please reach out to your firearm's manufacturer to get their exact thread specifications. Below is a general reference table to aid you. Note: the information below is for reference only. Fitment compatibility may vary as firearm manufacturers can modify their fitments without prior notice. If you encounter resistance while trying to mount the optic, please stop and contact the manufacturer to ensure you are using the correct screws.

## WHEN MOUNTING ON PICATINNY RAIL



The Ironclad Mini Reflex Sights are also capable of being mounted on almost any type of firearm that has a picatinny rail, including but not limited to: AR Pistols, SBRs, MSRs, AR-15/10s, Bullpups, AK style rifles, shotguns, SBS, lever guns, bolt guns, etc. To mount on any of these, you will utilize one of the included picatinny mounts. To mount the optic:

1. Ensure the firearm is pointed in a safe direction and unloaded.
2. Determine which mount to use for mounting – high (9) or low (8). \*FF26033 only comes with a low mount\*
  - a. The high mount (9) is best to use on AR type rifles or firearms with a high cheek rest.
  - b. The low mount (8) is best to use on firearms that have a low cheek rest or work best when the optic is mounted low – such as shotguns, or lever guns.
- 3 Place the optic on top of the chosen mount and ensure the holes and pins are all lined up appropriately.
4. Thread the screws into the holes and tighten to 15 in-lbs. (1.7 N-m) using a torque wrench.
5. Loose the mounting screw (6) on the side of the mount and place the optic on the picatinny rail of the firearm. It is best to mount reflex sights several inches down the rail, however, place the optic where it best suits your needs. *If mounting the optic to an AR-style firearm, please ensure the mount is fully seated on the upper receiver and not on the handguard*
6. Tighten the side mounting screw (6) securely up to 45 in-lbs (5.1 N-m).

## USING THE WINDAGE AND ELEVATION ADJUSTMENTS



The Ironclad Mini Reflex Sight is equipped with both elevation and windage adjustment. These are continuous adjustments that have no clicks. When zeroing, it is best to align the dot with a secondary optic or laser boresight first before making final adjustments.

To adjust the windage and elevation:

1. Using the provided adjustment tool or a small flat head screwdriver, turn the windage dial (4) on the side of the unit.
  - a. Turning the windage dial clockwise adjusts your Point of Aim LEFT.
  - b. Turning the windage dial counterclockwise adjusts your Point of Aim to the RIGHT.
2. For horizontal adjustments, use the provided adjustment tool or a small flat head screwdriver to turn the elevation dial (3) on the top of the unit.
  - a. Turning the elevation dial clockwise adjusts your Point of Aim DOWN.
  - b. Turning the elevation dial counterclockwise adjusts your Point of Aim UP.

*Note: your Point of Aim is opposite your Point of Impact, so moving your Point of Aim to the RIGHT (counterclockwise rotation of the windage dial) will move your Point of Impact to the LEFT.*

## BORESIGHTING AND SIGHTING IN

Boresighting and test firing should be performed safely on a firing range. Laser boresights are a quick and accurate method to sighting in a red dot sight. Below is listed the traditional method of boresighting.

1. Once the optic is mounted, remove the bolt or disassemble the firearm until there is a straight line of sight through the bore.
2. Using a target at least twenty to fifty yards/meters away, look through the bore of the firearm and locate the bullseye of the target.
3. Align the center of the target with the bore and make windage and elevation adjustments on the optic until the reticle is also centered.
4. Reassemble your firearm.
5. To verify the reflex sight is accurately sighted in, always fire a three-shot test group at 100 yards/meters. If you are still off, make adjustments as necessary to zero the optic.
6. Continue this until you have successfully zeroed the optic.





## MAINTENANCE

Proper maintenance of the Firefield Ironclad Mini Reflex Sight is recommended to ensure longevity. When the optic becomes dirty, it is recommended to wipe it down with a dry or slightly damp cloth. *Do not use solvents or cleaning products.* Blow dirt and debris off the lenses and wipe carefully with a lens cleaning cloth. No further maintenance is required.

## WARNING

Do NOT disassemble the reflex sight for any other reason not stated herein as this will void the warranty and could be hazardous. Any internal work should be handled by the manufacturer.

## TROUBLESHOOTING

Proper authorization is required before shipping any product back to Firefield. Failure to obtain authorization could result in your product being returned to the wrong address, lost, or damaged. Firefield is not liable for products returned without authorization.

### **IF THE SIGHT DOES NOT HOLD ZERO:**

1. Verify the sight is mounted securely to the firearm. If the sight can be shifted in any direction, re-tighten the mounting screws according to the mounting instructions. The sight will need to be re-zeroed afterwards.
2. Be sure to use factory-loaded ammunition of the same bullet type, weight, and preferable lot number when sighting in for consistent results.

### **IF THE RETICLE DOES NOT ILLUMINATE:**

1. Check that the battery is in working order and that the polarity of the battery is correct.
2. Check that there is no residue, film, or corrosion on the battery contacts that may be preventing the reticle from illuminating.

### **THE RETICLE IS BLURRY AND NOT IN FOCUS:**

1. Decrease the brightness of the reticle. The halo or fuzzy appearance is caused by excess illumination – more than is required for the current environment the sight is being used in.
2. Make sure the eyepiece is clean and does not have any film, fingerprints, or debris covering the surface. Blow off any debris or dirt covering the lens or wipe with a lens cleaning cloth.

3. If you are testing the product at close range (5 yards/meters or less), the eye will accommodate and focus either on the sight's reticle or the target you are observing, not both. Test the product beyond 5 yards/meters and focus your eye on the target, then the reticle and target should be in focus. The reticle will appear sharpest at 50-yard ranges because the parallax is set at 50 yards/meters.

**THE RETICLE ILLUMINATION TURNS OFF WHILE FIRING:**

1. Check that the battery is in working order and that the polarity of the battery is correct.
2. Check that there is no residue, film, or corrosion on the battery contacts that may be preventing the reticle from illuminating.
3. Verify the sight is mounted securely to the firearm. If the sight can be shifted in any direction, re-tighten the mounting screws according to the mounting instructions. The sight will need to be re-zeroed afterwards.

## ADDITIONAL WARNING AND SAFETY INSTRUCTIONS

- Remove and immediately recycle or dispose of used batteries according to local regulations and keep away from children. Do NOT dispose of batteries in household trash or incinerate.
- Even used batteries may cause severe injury or death.
- Call a local poison control center for treatment information.
- Battery Type: CR2032.
- Nominal Voltage: 3.0 Volt.
- Non-rechargeable batteries are not to be recharged.
- Do not force discharge, recharge, disassemble, heat above 140°F / 60°C or incinerate. Doing so may result in injury due to venting, leakage or explosion resulting in chemical burns.
- Ensure the batteries are installed correctly according to polarity (+ and -).
- Do not mix old and new batteries, different brands or types of batteries, such as alkaline, carbon-zinc, or rechargeable batteries.
- Remove and immediately recycle or dispose of batteries from equipment not used for an extended period of time according to local regulations.
- Always completely secure the battery compartment. If the battery compartment does not close securely, stop using the product, remove the batteries, and keep them away from children.

## **WARNING**

- **INGESTION HAZARD:** This product contains a button cell or coin battery.
- **DEATH** or serious injury can occur if ingested.
- A swallowed button cell or coin battery can cause **Internal Chemical Burns** in as little as **2 hours**.
- **KEEP** new and used batteries **OUT OF REACH of CHILDREN**.
- **Seek immediate medical attention** if a battery is suspected to be swallowed or inserted inside any part of the body.



Battery type: **CR2032**      Battery voltage: **3V**

## This image shows a single sheet of white paper with horizontal ruling lines. The lines are evenly spaced and run across the width of the page. There are no margins, text, or other markings on the paper.

[illegible]



[www.firefield.com](http://www.firefield.com)